

DENTAL Diode Laser

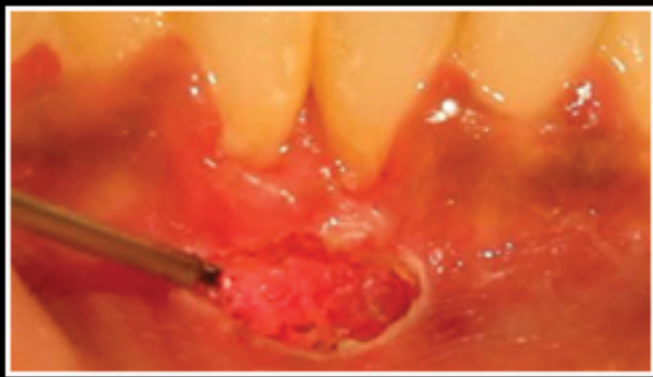


BEST EXPERIENCE



Innovative | Efficient | Versatile | Accurate

Application Of Dental Laser



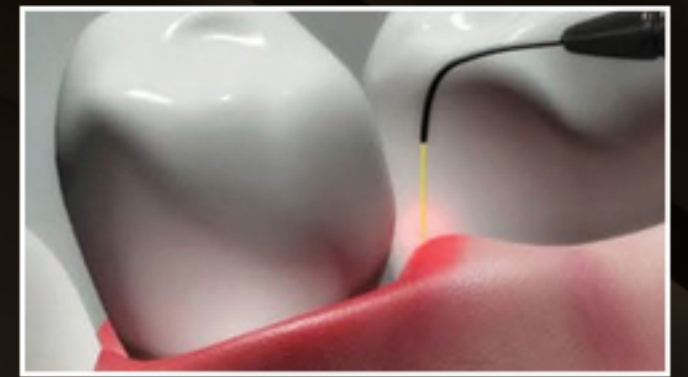
Bloodless Soft Tissue Surgery



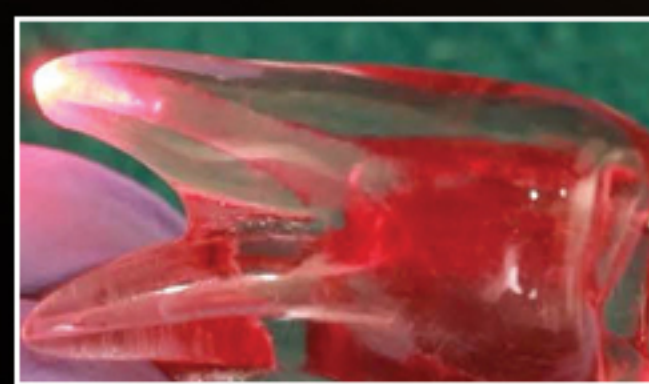
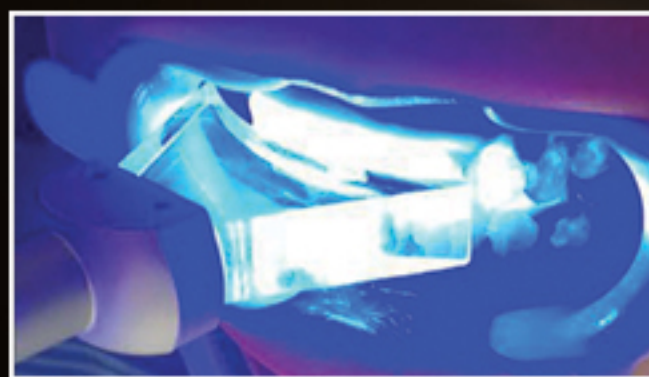
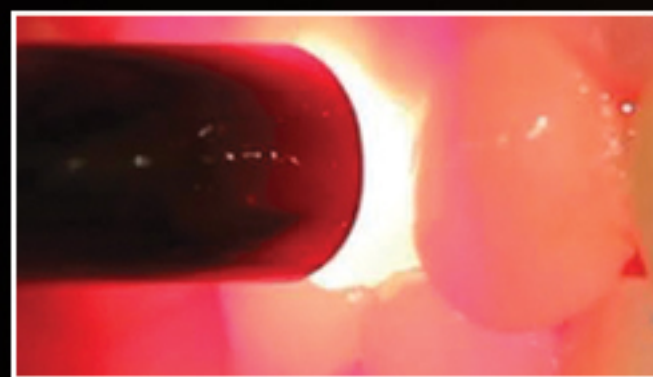
Periodontal Treatment



LLLT / Photobiomodulation



Teeth Whitening



Excellent in Endodontic
Laser treatment

Advantages Of Laser Technology

- Minimally Invasive, No Bleeding, No Swelling, No anesthesia
- Less or No Pain
- No Suturing
- Less drug intervention
- More Comfortable Surgical Procedures, Better Patient Compliance
- Minimal Postoperative Discomfort
- Faster Healing
- Efficient teeth Whitening, with No or Minimum sensitivity

Precision and Power in One Compact Device

The Pulse-Dental laser by AR Photonics delivers unmatched precision with its 980nm wavelength, making it ideal for a wide range of dental procedures. This diode laser offers a powerful 10-watt output, ensuring efficient and effective treatments every time. Whether for soft tissue surgery, periodontal therapy, or teeth whitening, Pulse-Dental is designed to enhance your practice with reliable results.

Advanced Technology for Modern Dentistry

Pulse-Dental incorporates cutting-edge semiconductor technology to provide dentists with a versatile tool that meets the demands of today's fast-paced dental environment. Its compact design does not compromise on power, offering you the flexibility to perform a variety of procedures with ease. Elevate your patient care with the precision and reliability of AR Photonics' most advanced dental laser.

Safe, Effective, and Patient-Friendly

Safety and patient comfort are paramount in every procedure. The Pulse-Dental laser ensures minimal tissue trauma, reduced bleeding, and faster healing times, enhancing patient satisfaction. Its user-friendly interface and intuitive controls allow you to focus on what matters most—delivering exceptional care with confidence.

Versatile Applications, Superior Outcomes

From soft tissue surgeries to cosmetic treatments, Pulse-Dental's 10-watt diode laser provides versatility in a compact, portable unit. Its 980nm wavelength is optimized for dental applications, offering superior absorption in hemoglobin and melanin for precise tissue interaction. Trust Pulse-Dental to deliver consistent, high-quality results across a broad spectrum of dental treatments.



**Bright Smiles, Happy Patients
Transform with
AR Photniccs Dental Laser**

Transformative Results

Fibroma



Before



Directly After



Two Week Later

Frenectomy



Before



Directly After



Two Week Later

Gingival Pigmentation



Before



Directly After



Two Week Later

E

Effective

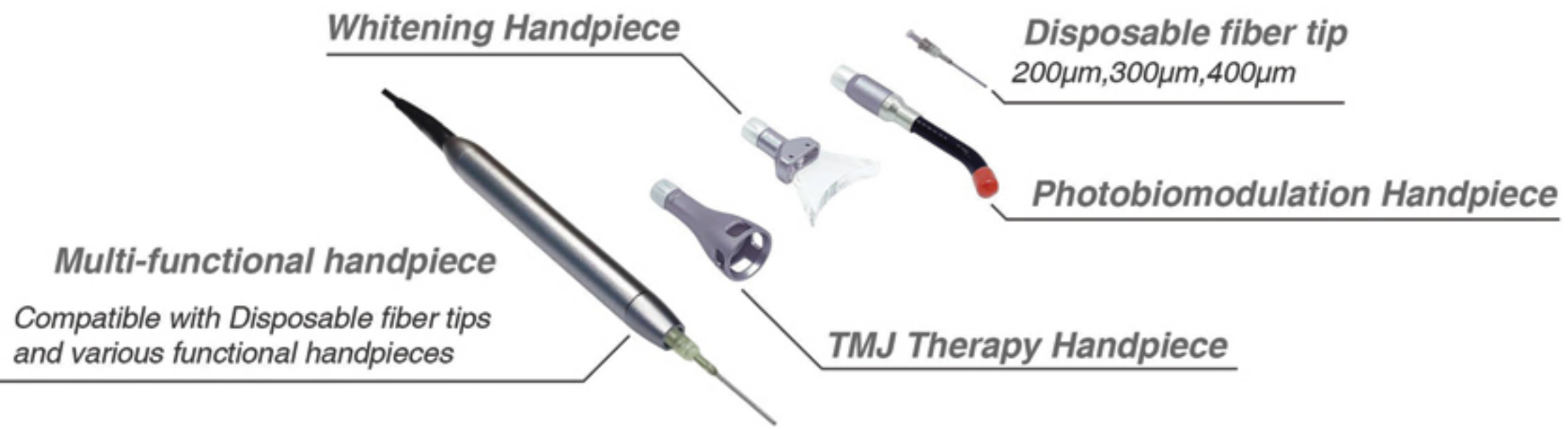
A

Advanced

A

Affordable

Accessories



One Machine Many Treatment Options

Endodontics

- Pulpotomy
- Root Canal Disinfection
- Apex Decontamination
- Pulp Capping

Theraphy

- Biostimulation
- Dentin Desensitization
- Hypersensitivity
- Aphthae | Cheilitis

Periodontics

- Pocket decontamination
- Gum recession treatment
- Inflammation reduction
- Flapless Periodontitis

Conservative

- Crown lengthening
- Gingival retraction for impressions
- Carries Detection

Implant

- Peri-implantitis
- Implant exposure
- Removal of granulation tissue

Surgery

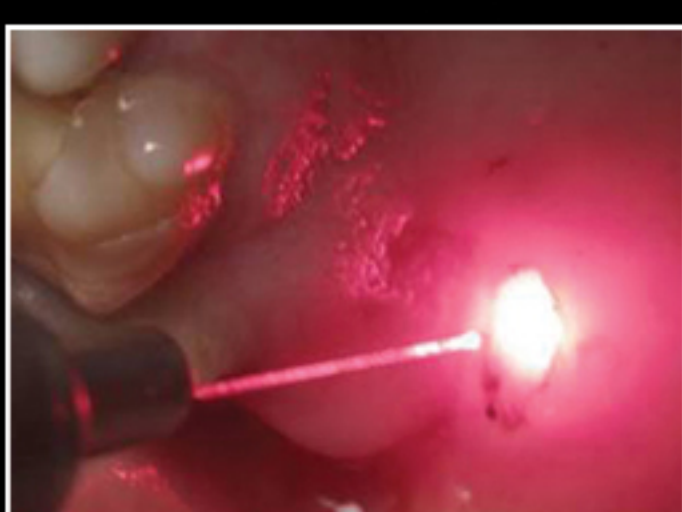
- Biopsy
- Crown lengthening
- Excision of lesions
- Exposure of unerupted / partially erupted teeth
- Fibroma removal Frenectomy
- Gingival incision & excision
- Incisions and draining of abscesses
- Leukoplakia
- Operculectomy
- Papillectomy
- Tissue retraction for impressions
- Vestibuloplasty

Cosmetic

- Teeth Whitening
- Gums Depigmentation
- Lip Remodeling

Pain Management

- Jaw Locking
- Trismus
- Frozen Shoulders
- Tennis Elbow



Technical Specifications

Model Name : Pulse- Dental
Laser type : Diode, Semiconductor
Wavelength : 980nm
Max Power : 10 watts
Aiming beam : 650nm, < 5mw
Operation Mode : Continuous or pulsed
Pulsed Time : 0.01ms-3S
Beam Delivery : SMA905 connector
Optic Fiber Compatible : Optic fibers having a core from 200um to 1000um, NA=0.22~0.48
Beam Emission Initiation : Footswitch
Controller : Microprocessor
Display : 7 Inch with touch panel Medical approved
Cooling : Silent cooling fan, Multi- channel copper tube electronic cooling
Power supply of the laser : DC 15V/4.0A from the separate AC
Power supply of AC adapter : 100~240VA,50/60hz
AC Adapter : 15V /4.0A
Laser Dimensions : 170mm(w)*180(L)*250(H)mm
Laser weight : 2 kg
Environmental conditions during work : From +5 to 30 ⁰ C degree, relative humidity from 20% up to 90%
Class of Medical Device : IIB
Laser safety Class : 4
Electric Safety Class : I type B
Housing Protection Degree : Ip20b
Footswitch Protection Degree : IPX8
Battery Capacity : 3000mAh



Canada - Sandell Industrial Park
12827-12837 76 AVE Surrey Bc V

India - A815, MIDC Industrial Area,
Kopar Khairane, Navi Mumbai,
Maharashtra 400709

Singapore - 60 Paya Lebar Road #11-53
Paya Lebar Square Singapore 409051

USA - 4425 Iran St Denver CO
80249 USA

